



Importing A V-Station HD Project Into Sony Vegas Pro 12/13

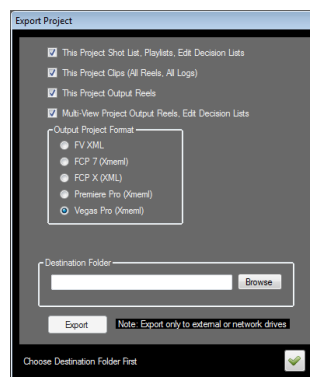
V-Station HD can output a project's content video files, the edit decision lists, and logs that can be imported into Vegas Pro. You will first export the project to an external location, such as a USB hard drive or network drive, and then import the project into Vegas Pro.

Important: All media you import with Vegas Pro is kept in its original location. So if you are using an external drive or network location to transfer a project, then you will want to first copy the exported video files and .xml file to the location where you want to store the Vegas Pro project. This will be explained in section B.

A. Export project from V-Station HD

If you've created one or more Multi-View projects based on the V-Station project files that you would like to transfer, first copy (using Window's Explorer) the desired edit decision lists (".edlx") files from the D:\MV Projects\<<mvProjectName> folder to the D:\VS Projects\<<my Project Name> folder.

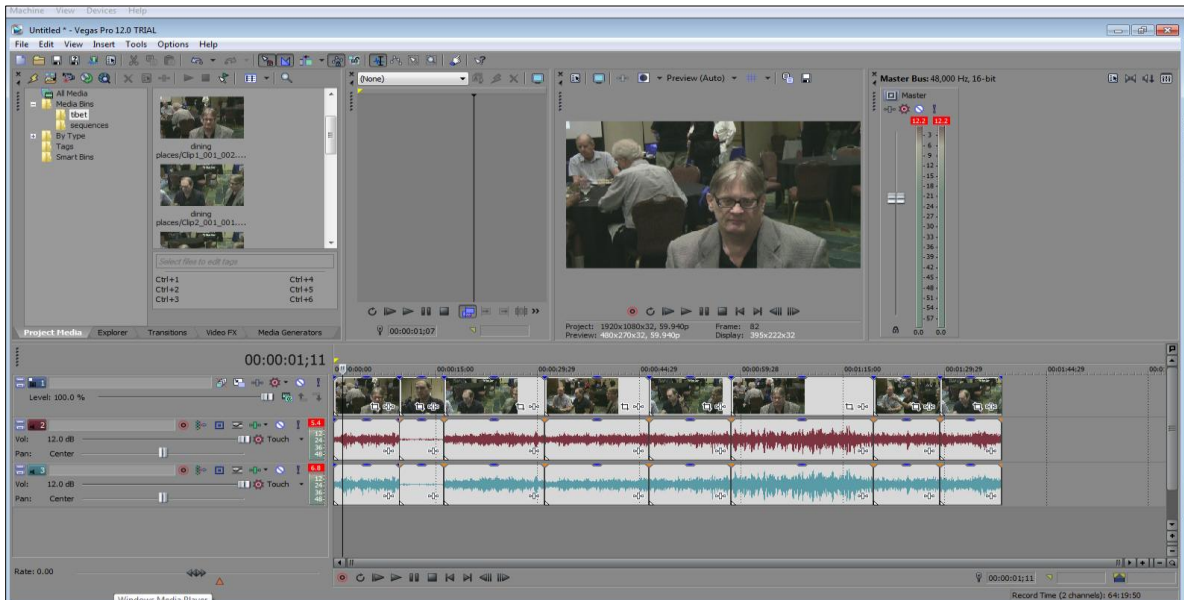
1. Launch V-Station HD (if not yet running) and click on the **Project** button in the Record Panel to bring up the Project Info panel.
2. Select the project you wish to export from this panel using the pull down **Project** combo box.
3. Click on the **Export Project** button. This will bring up the Export Project panel as shown below:



4. From the Export Project panel, check all three of the boxes to export the metadata, source files, and (optionally) output reels.
5. Choose the Output Project Format: **Vegas Pro (Xmeml)**
6. Click on the **Browse** button to the location to export the files (e.g., external USB drive or network drive). Select or create a folder to hold the project files.
7. Click the **Export** button and wait until complete. When done, the panel will close. Then close the Project Info panel.

B. Import project into Vegas Pro

1. If the exported project folder is not the destination folder of the Vegas Pro project, then you must first copy the exported content to the folder of your destination. Otherwise you may skip this step. If you copy, then keep the content folder hierarchy the same by copying the entire project folder name. E.g., navigate to the \Video folder and copy your project's name folder, e.g., "my project" folder to the disk drive and folder where the Vegas Pro project will reside. Similarly, if you had also checked the box on V-Station HD to export "This Project Output Reels" of reels created in V-Station HD, then create a new subfolder called "Output Reels" within the Vegas Pro project name folder to hold these files. Copy the video files from the \Video_Output Reels\- 2. Launch Vegas Pro and select "New Project." In the New Project Dialogue box select as the location (preferred folder) if you copied your V-Station HD project. By default, all of your captured Video, Audio and previews are stored in this Project Folder that you've copied from V-Station HD.
- 3. In Vegas Pro, select File >Import Final Cut Pro7 XML... and choose the <projectName>[VPRO]_xmeme1.xml file with the name of your project and click Open. (Yes. import as FCP7 but be sure to select the one with the suffix "[VPRO] xmeme1".)
- 4. Vegas Pro will now ask where the files are located. Choose the location and navigate to the first clip and choose the matching filename. Vegas should then find the remaining files.
- 5. When Importing you may get an "Exception Message...." regarding a Track Event Group, but can be ignored.



Note: If you have more than one EDL in your V-Station HD project, and try to import this into Vegas Pro, then it will only load the first sequence named in the xml file. This is because Vegas only supports one Timeline per project. So, ensure you only have one .EDLX file in your project.