

Media Commander® MC-20

Professional RS-422A Device Controller

Control audio & video devices with this completely configurable jog/shuttle remote controller

the pro's choice for

✓ DVRs ✓ VTRs

✓ Modular Digital Multi-tracks

✓ DVD Recorders & Players



- User-assignable controls (keys & dials) for 4 different devices
- Adjustable dynamic jog/shuttle settings for each device
- Removable label templates to match controller to different devices
- Affordable replacement for manufacturers' obsolete remote controllers

Media Commander® MC-20

Professional RS-422A Device Controller

The First Fully-configurable Jog/Shuttle Device Controller

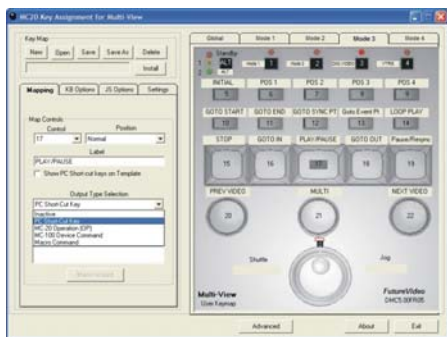
FutureVideo's new MC-20 alters the paradigm with a professional RS-422A device controller that can be adapted to any device using the Sony RS-422A protocol and still fit everyone's budget. The MC-20 is durable, comfortable, and flexible enough to accommodate a range of record/playback equipment found in broadcast, remote, or post facilities. The MC-20 is a very practical "one-size-fits-all" solution—and an ideal replacement for older or obsolete controllers.

Assignable Keys & Dials Facilitate Multiple Devices

The MC-20 was designed to be readily adaptable to work with many types of devices with its custom key/dial configurations and removable label templates. The MC-20 enables key maps to be instantly switched to accommodate a change from one device to another (e.g., ATR to VTR). Up to 4 different key maps can be accessed instantly from the MC-20's flash memory via the "Mode" keys.

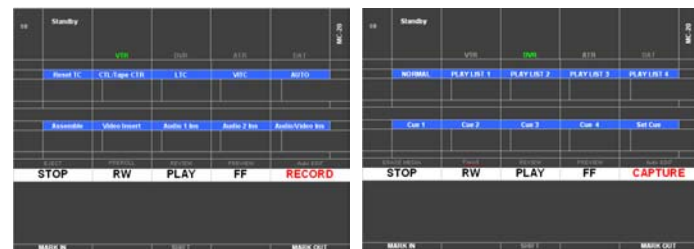
FutureVideo's KeyAssigner & Labeling Software

Media Commander's KeyAssigner™ software is an engineering marvel in its own right. It provides the ability to visually map any of the MC-20's 22 function & transport command keys, including 72 assignable jog/shuttle positions to an appropriate output command/function/macro—providing up to 100 assignable functions in four different modes.



KeyAssigner Software Screen

Also included with the KeyAssigner software are pre-defined key maps for common machine control applications. Matching Microsoft Word document templates are provided which can be used to print professional-style labels with various colors, backgrounds, and fonts on a compatible photo or inkjet printer using the supplied pre-cut label templates.



MC-20 Key Labels
Left VTR, Right DVR (ATR & DAT labels not shown)

Auxiliary Device Control

A general purpose interface (GPI) port has been conveniently provided for controlling other equipment in the studio or the field.



MC-20 Rear Panel

SPECIFICATIONS	
MECHANICAL	
Physical	
Dimensions	8 3/4" x 4 9/16" x 1 11/16"
Weight	Approximately 1.2 lb
Key Labels & Lens	Photo printer compatible template paper label with polycarbonate lens overlay
Enclosure	High-impact molded ABS plastic
Controls & Displays	
Jog	Rotary, indented, variable user characteristics
Shuttle	Rotary, spring-loaded, 15 position, variable user characteristics
Function/Mode Keys	15 tactile switches
Command Keys	8 keyboard switches
LEDs	6
ELECTRICAL	
Memory	1mb Flash
Processors	2 (micro-controller, USB controller)
Power	7.5vDC @ 150 mA from supplied adapter
Connectors	USB, GPI, EditLink (RS-422A serial port), DC Power
KEY MAPPING	
Maximum Key Assignments	100 (4 modes), 8 key sets
Jog & Shuttle Assignments	72 total; 12 for Jog (3 positions x 4 modes), 60 for Shuttle (15 positions x 4 modes)
Jog/Shuttle Modes	4; selectable by keys or via USB control port
SHIFT Sets	1 additional key set for command keys
Output Assignment Types	RS-422A Sony Protocol Serial, MC-20 GPI, Operational
SOFTWARE	
CD-ROM (provided)	MC-20 Operating Manual, KeyAssigner software, USB Communications Port drivers
GENERAL	
System Requirements for KeyAssigner Software Use	
PC with USB Port, Microsoft Windows 2000/XP	
Supplied Accessories	
1 x USB Cable (Type A to Type B), 1 x 7.5vDC Mains Power Adapter, Pre-cut gloss paper label templates 1 x RS-422A Serial Control Cable (FV0077)	
OEM Options	
Keyboard Template as permanent lexan overlay or removable paper label	
SDK available for custom development, plus Engineering Overview Guide	
Warranty	
2 year parts & labor limited warranty	
Ordering Information	
Item Number FV0220	

© 2009 FutureVideo Products, Inc. All Rights Reserved. FutureVideo, Media Commander, and EditLink are registered trademarks of FutureVideo Products, Inc. KeyAssigner is a trademark of FutureVideo Products, Inc. Any other trademarks or service marks herein are the property of their respective owners. Specifications are subject to change without notice. 60-02-020

FutureVideo®
 FutureVideo Products, Inc.
 28202 Cabot Road, Suite 300
 Laguna Niguel, CA 92677 USA
 Tel: 949.363.1286 • Fax: 861.261.1686
www.futurevideo.com