

# Media Commander® MC-20PRO

## Multi-function Jog/Shuttle Controller



**The industry's most flexible, fully-programmable professional control surface!**

- Ergonomically designed for comfort - plus making editing easier and faster
- Pre-installed key maps for popular digital audio/video editing application software (PC or Mac)
- KeyAssigner™ software visually maps buttons and jog/shuttle controls to any application's short-cut keys & other functions\*\*
- Pre-cut, removable templates for creating professional-looking custom labels
- EditLink™ port to control a network of up to 16 VCRs, Camcorders, Audio Decks, & DVD Recorders



- Dynamic jog/shuttle settings for custom feel
- Up to 180 possible assignments per application
- Macro creation for multiple commands
- Key assignments retained in flash memory

PC & Mac  
USB

Patented

# Media Commander® MC-20PRO

## Multi-function Jog/Shuttle Controller

### The Need Was Overdue

Today's demanding audio/video editing and media management software applications—particularly those found in the professional/industrial/broadcast environments—have been lacking a truly professional jog/shuttle with a built-in multi-function keyboard. It would have to be ergonomically comfortable, efficient to use, and flexible enough to adapt to changes in application software. It should also be capable of operating with a variety of *digital audio/video editing (non-linear) PC/Mac software products.*

### Media Commander MC-20PRO Provides The Solution

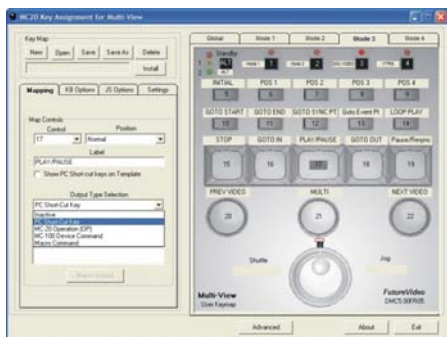
The MC-20PRO, along with its powerful KeyAssigner software, is the result of several years of R&D by FutureVideo—an audio/video device control technology pioneer. The MC-20PRO addresses the needs of the professional user and provides capabilities well beyond the present generation of jog/shuttle control surfaces. It is designed to adapt to future changes in user's application software, so the device will not become obsolete when new software applications are added or evolve. It also addresses the fact that multiple tasks exist in the editing suite. It can even control multiple analog & digital audio and video recorders in the editing suite\*.

### Modal Keys Facilitate Multiple Tasks

The MC-20PRO's unique design enables key maps to be instantly switched to accommodate a change from one task to another (e.g., capture to editing) or among different applications. Key maps can be switched instantly using the MC-20PRO's top four "Mode" keys or from a command received through the unit's USB control port.

### FutureVideo's KeyAssigner & Labeling Software

Media Commander's KeyAssigner™ software\*\* is an engineering marvel in its own right. It provides the ability to visually map any of the MC-20PRO's 22 function & transport command keys, including 72 assignable jog/shuttle positions to an appropriate output command/function/macro—*plus* provide a labeling system for creating custom templates for different applications.



Also included with the KeyAssigner software are pre-defined loadable key maps for popular digital A/V editing software from Adobe, Apple, Avid, Canopus, Media 100, Pinnacle, NewTek, Ulead, and others. Matching Microsoft Word document templates are provided which can be used to print professional-style labels with various colors, backgrounds, and fonts on a compatible photo or inkjet printer using the supplied pre-cut label templates.

\* With optional FutureVideo MC-100 Device Control Module(s)

\*\* KeyAssigner software currently is available only on Windows 2000/XP platform. Loadable key maps can be used with either PC or Mac.

© 2005 FutureVideo Products, Inc. All Rights Reserved. FutureVideo, Media Commander are registered trademarks of FutureVideo Products, Inc. EditLink & KeyAssigner are trademarks of FutureVideo Products, Inc. Any other trademarks or service marks herein are the property of their respective owners. MC-20PRO has been awarded U.S. Patent #D 516,559. Specifications are subject to change without notice. 60-02-0201

### Enhanced Device Control Option

MC-20PRO's exclusive EditLink™ port seamlessly integrates all the capabilities of FutureVideo's MC-100 device control modules. This option enables any of the keys and the jog/shuttle to operate a network of up to 16 VCRs, Audio tape decks (DTRS/DTS machines), and selected DVD recorders. A general purpose interface (GPI) port has been conveniently provided for controlling other equipment in the editing suite.

### MC-20PRO Connector Panel



MECHANICAL	
<b>Physical</b>	
Dimensions	8 3/4" x 4 9/16" x 1 11/16"
Weight	Approximately 1.25 lb
Key Labels & Lens	Photo printer compatible glossy paper labels with polycarbonate lens overlay
Enclosure	High-impact molded ABS plastic
<b>Controls &amp; Displays</b>	
Jog	Rotary, indented, variable user characteristics
Shuttle	Rotary, spring-loaded, 15 position, variable user characteristics
Function/Mode Keys	15 tactile switches
Command Keys	8 keyboard switches
LEDs	8
ELECTRICAL	
Memory	1mb Flash
Processors	2 (micro-controller, USB controller)
Power	7.5VDC-9VDC @ 300 mA from supplied adapter
Connectors	USB, GPI, EditLink, DC Power
KEY MAPPING	
Maximum Key Assignments	180 ( 4 modes)
Jog & Shuttle Assignments	72 total; 12 for Jog (3 positions x 4 modes), 60 for Shuttle (15 positions x 4 modes)
Jog/Shuttle Modes	4; selectable by keys or via USB control port
ALT Sets	2 additional key sets for function keys and optionally command keys
SHIFT Sets	1 additional key set for command keys (when ALT set not applied)
Output Assignment Types	4 (PC Short-Cut Key, Macro Commands, MC-100 Device Commands, MC-20PRO Operational)
SOFTWARE	
CD-ROM (provided)	MC-20PRO Operating Manual, KeyAssigner software (Win 2000/XP), USB Communications Port drivers (Win 2000/XP)
GENERAL	
<b>System Requirements</b>	
PC Pentium III or higher with USB Port, Microsoft Windows 2000/XP	
Apple Mac G4/G5 PowerPC or Intel Core Duo with USB port, OS X 10.4.x	
<b>Supplied Accessories</b>	
1 x USB Cable (Type A to Type B), 1 x 7.5VDC Mains Power Adapter, Pre-cut glossy sheet paper label templates	
<b>Optional Accessories</b>	
Media Commander 100 (MC-100) transport control modules for device control	
<b>OEM Options</b>	
Custom case colors	
Keyboard Template as permanent polycarbonate overlay or removable paper label	
SDK available for custom development, plus Engineering Overview Guide	
<b>Warranty</b>	
2 year parts & labor limited warranty	

**FutureVideo®**

FutureVideo Products, Inc.

28202 Cabot Road, Suite 300

Laguna Niguel, CA 92677 USA

Tel: 949.363.1286 • Fax: 949.363.9461

Email: [sales@futurevideo.com](mailto:sales@futurevideo.com) • [www.futurevideo.com](http://www.futurevideo.com)