

Media Commander® MC-20PRO II

Multi-purpose Jog/Shuttle Controller



The industry's most flexible,
fully-configurable,
professional controller!

2 controllers in 1

- ✓ Digital Media & System Control Surface
- ✓ Built-in RS-422A Device Control



- Up to 180 possible assignments per application
- Dynamic jog/shuttle settings for custom feel
- Macro creation for multiple commands
- Control assignments retained in flash memory
- Replacement for obsolete manufacturers' controllers



patented

Media Commander[®] MC-20PRO II

Multi-purpose Jog/Shuttle Controller

The Need Was Overdue

Today's demanding broadcast, post-production and media management environments—with tighter-than-ever budgets—have been lacking a single controller that can do it all: Provide a single jog/shuttle controller for audio and video record/playback devices fitted with an RS-422A remote control port; and be capable of interfacing with Mac or PC-based NLE/DAM applications via hot keys. Moreover, it would have to be ergonomically comfortable, efficient to use, and flexible enough to adapt to application changes.

Media Commander MC-20PRO II Provides The Solution

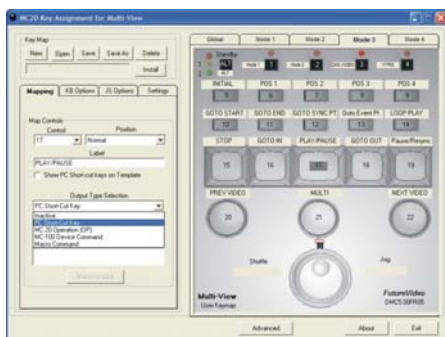
The MC-20PRO II, along with its powerful KeyAssigner software, is the result of several years of R&D by FutureVideo—an audio/video device control technology pioneer. The MC-20PRO II addresses the needs of professional users by providing capabilities well beyond the present generation of jog/shuttle controllers. More importantly, it's designed to adapt to future changes in the user's application software or choice of RS-422A-controlled devices. Its fully-assignable controls ensure the MC-20PRO II will remain viable for years to come.

Assignable Keys Facilitate Multiple Tasks

The MC-20PRO II's unique design enables key maps to be instantly switched to accommodate a change from one task to another (e.g., video capture to timeline editing in NLE control mode or VTR to ATR in RS-422A device control mode). Furthermore, device control and short-cut key assignment usage can be accomplished within the *same* mode. This enables the MC-20PRO II to function as a transport/device controller and as a NLE or DAM control surface at the same time.

FutureVideo's KeyAssigner & Labeling Software

Media Commander's KeyAssigner™ software is an engineering marvel in its own right. It provides the ability to visually map any of the MC-20PRO II's 22 function & transport command keys, including 72 assignable jog/shuttle positions to an appropriate output command/function/macro.



KeyAssigner Software Screen

FutureVideo provides pre-defined key maps for popular non-linear editing software, such as Apple's Final Cut Studio/Final Cut Express, Adobe Premiere, Canopus Edius, Sony Vegas, and others. A key map and labels are also provided for use in the device control mode. Matching Microsoft Word document templates are provided which can be used to print professional-style labels with various colors, backgrounds, and fonts on a compatible photo or inkjet printer using the supplied pre-cut label templates.

Auxiliary Device Control

A general purpose interface (GPI) port has been conveniently provided for controlling other equipment in the editing suite.



MC-20PRO II Rear Panel

SPECIFICATIONBS	
MECHANICAL	
Physical	
Dimensions	8 3/4" x 4 9/16" x 1 11/16"
Weight	Approximately 1.2 lb
Key Labels & Lens	Photo printer compatible template paper label with polycarbonate lens overlay
Enclosure	High-impact molded ABS plastic
Controls & Displays	
Jog	Rotary, indented, variable user characteristics
Shuttle	Rotary, spring-loaded, 15 position, variable user characteristics
Function/Mode Keys	15 tactile switches
Command Keys	8 keyboard switches
LEDs	8
ELECTRICAL	
Memory	1mb Flash
Processors	2 (micro-controller, USB controller)
Power	7.5vDC @ 150 mA from supplied adapter
Connectors	USB, GPI, EditLink, DC Power
KEY MAPPING	
Maximum Key Assignments	180 (4 modes), 16 Key Sets
Jog & Shuttle Assignments	72 total; 12 for Jog (3 positions x 4 modes), 60 for Shuttle (15 positions x 4 modes)
Jog/Shuttle Modes	4; selectable by keys or via USB control port
ALT Sets	2 additional key sets for function keys
SHIFT Sets	1 additional key set for command keys
Output Assignment Types	PC Short-Cut Key, Macro Commands, RS-422A Device Commands, GPI Operational
SOFTWARE	
CD-ROM (provided)	MC-20PRO II Operating Manual, KeyAssigner software, USB Communications Port drivers
GENERAL	
System Requirements	
PC/MAC with USB Port (operational mode); PC with USB port, Microsoft Windows 2000/XP (KeyAssigner Software)	
Supplied Accessories	
1 x USB Cable (Type A to Type B), 1 x 7.5vDC Mains Power Adapter, Pre-cut gloss paper label templates	
OEM Options	
Keyboard Template as permanent lexan overlay or removable paper label	
SDK available for custom development, plus Engineering Overview Guide	
Warranty	
2 year parts & labor limited warranty	
Ordering Information	
Item Number FV0221	

© 2009 FutureVideo Products, Inc. All Rights Reserved. FutureVideo, Media Commander, and EditLink are registered trademarks of FutureVideo Products, Inc. KeyAssigner is a trademark of FutureVideo Products, Inc. Any other trademarks or service marks herein are the property of their respective owners. Specifications are subject to change without notice. 60-02-0202

FutureVideo[®]

FutureVideo Products, Inc.
28202 Cabot Road, Suite 300
Laguna Niguel, CA 92677 USA
Tel: 949.363.1286 • Fax: 861.261.1686
www.futurevideo.com